



Customizing Grid View with DataGridView Extension 1.1.1



Revision Date 28 February 2007



Content

- OVERVIEW 3**
- INTEGRATION 4**
 - EXTENSION BUTTON 4
 - CONTEXT MENU 4
 - SHORTCUT 5
 - SETTINGS 6
 - ADVANCED SETTINGS 7
- CUSTOMIZING GRID VIEW 8**
 - THEMES 9
 - General Settings* 9
 - Sizing* 11
 - Selection* 12
 - Cell Styles* 13
 - Header Style* 16
 - Borders* 17
 - THEMES 18
 - COLUMNS 19
 - Editing Column Style* 20
 - Applying column style from column* 21
- EXPORT/IMPORT SETTINGS 21**
- FIND 23**
- EXPORT 24**
 - HTML 24
 - MICROSOFT EXCEL 25
 - PDF 26
- PRINT 27**
- SECURITY 28**
- FAQ 29**



Overview

One of the most used ways to represent data these days is the grid representation – in row and columns. Using grid representation allows showing in a structured way huge amount of data by preserving the readability. In addition the data could be easily sorted or filtered.

The software companies that uses grid representation of their data usually does not allow the end-users to customize the grid in order to meet their specific needs. Some of them allow basic customizations like showing and hiding columns and/or column reorder. Moreover, the user might not be able to export the grid in the way they see it in a file or even print it.

DataGridView Extension 1.1 is a free component developed by [CompletiT Ltd.](#), which extends the standard data grid view by adding features useful for the end-user. With the Extension you can:

- Export the grid in the way it look to Excel, Html or Pdf file;
- Print;
- Specify formatting for cell or columns;
- Changing colors for rows and columns;
- Define cell borders – type and colors
- Save the customizations in themes;
- Using default theme for all grids;
- Export/import settings;
- Other

All the settings are stored in a files so next time you launch the same application again you will see the grids in the same way you saw last time.

The DataGridView Extension 1.1 is integrated in the grid view in non-disturbing way – as small button on the top-left corner on the grid, as context menu or shortcut.



Integration

DataGridView Extension 1.1 is integrated into the grid in several different ways – as button, in the context menu and as shot-cut combination. You can change these integration settings by using [Settings](#) dialog, which you will find under the menu “Edit” in the [Grid Settings](#) dialog.

Extension Button

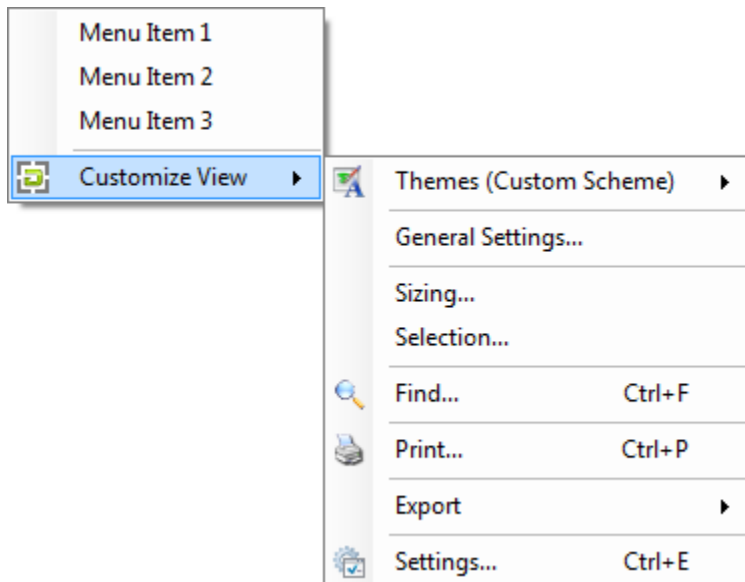
By default the DataGridView Extension 1.1 is configured to show a button in the top-left corner of the data grid. The button is shown when the mouse is over the grid view area or when the grid is the active control.

If you want to change how the button is integrated or its style, see [Settings](#) dialog.

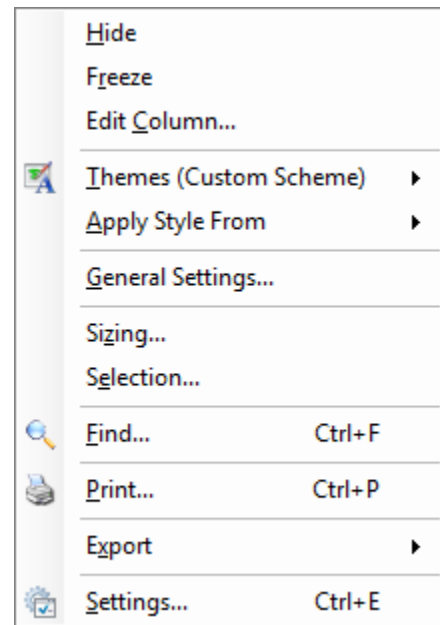
Context Menu

The Extension also adds a context menu to the data grid if the grid does not have any. If the data grid already has context menu, a new item “Customize View” will be added as last menu containing sub-menu.

The context menu contains the most commonly used actions and provides fast and easy way to configure some specific features of the grid view. Also, if you right-clicks on the grid view column’s header, then the context menu will contains some specific items



for column editing.





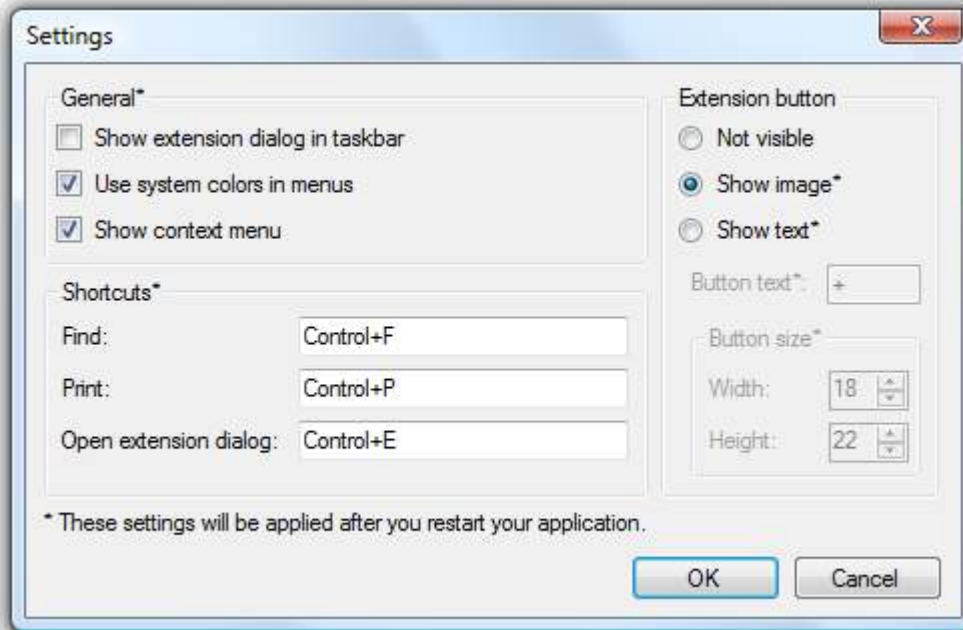
Shortcut

The last way to open the Grid Settings dialog is by using shortcut key combination – Control+E by default.



Settings

The Settings dialog is the place where you can control how the extension is integrated,



to which shortcut keys to respond and other user interface options.

The dialog contains three groups of setting – “General”, “Shortcuts” and “Extension button”.

“General” group contains options for the behavior of the Grid Settings dialog. Check “Show extension in the taskbar” if you want to see the Grid Settings dialog in the task bar when opened. “Use system colors in menus” option is used to define whether or not the colors defined by the current Windows theme will be used in the Grid Settings dialog. Otherwise the standard color scheme will be used. If you want to see the Grid view context menu, check the third option – “Show context menu”.

Under the “Shortcuts” group you are able to define a shortcut key combination for Find, Print and open Grid Settings dialog. Clear the key combination if you don't want to use shortcut.

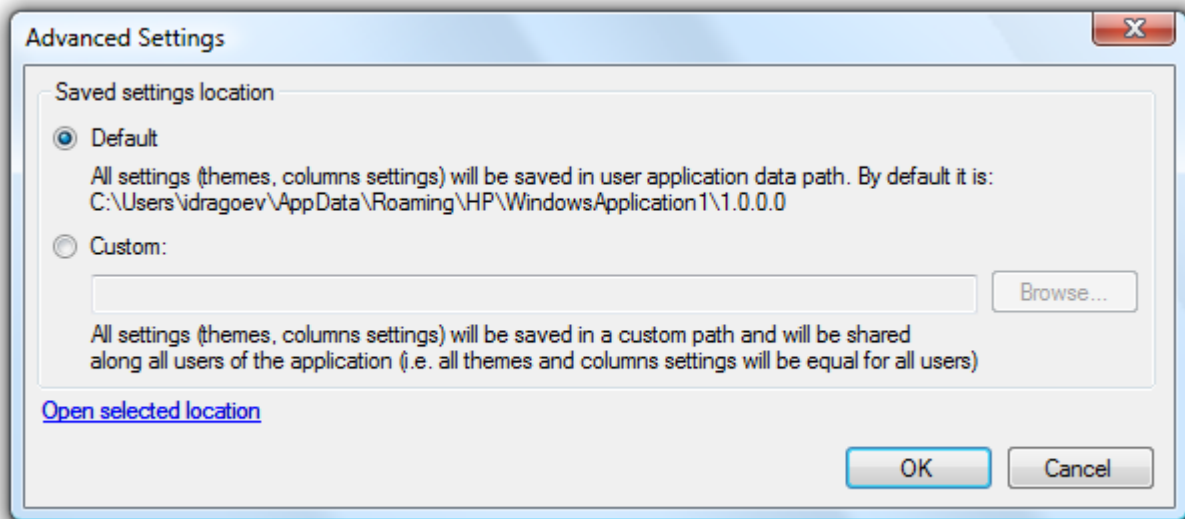
On the right side is the Extension button group where you can control the way the button is integrated. The possible options are “Not Visible” – the button will not be integrated; “Show Image” – shows the icon of the Grid Extension and “Show Text” – show text instead of the icon. If the last option is selected then you can type the text and define the size of the button.



Some of the options require application to be restarted in order to take effect. These options are marked with "*" in their names.

Advanced Settings

In addition to the integration settings, you are able to change the place the Grid Settings files are stored. You can do that by opening "Advance Settings" dialog from the "Edit" menu in Grid Settings dialog.



By default all settings (themes, columns settings, etc) are stored under the user's application folder.

If you prefer to store the settings to another location, click "Default" and use the Browse button to navigate to the new folder.

You can also click on the "Open selected location" link if you want to see the stored settings files.

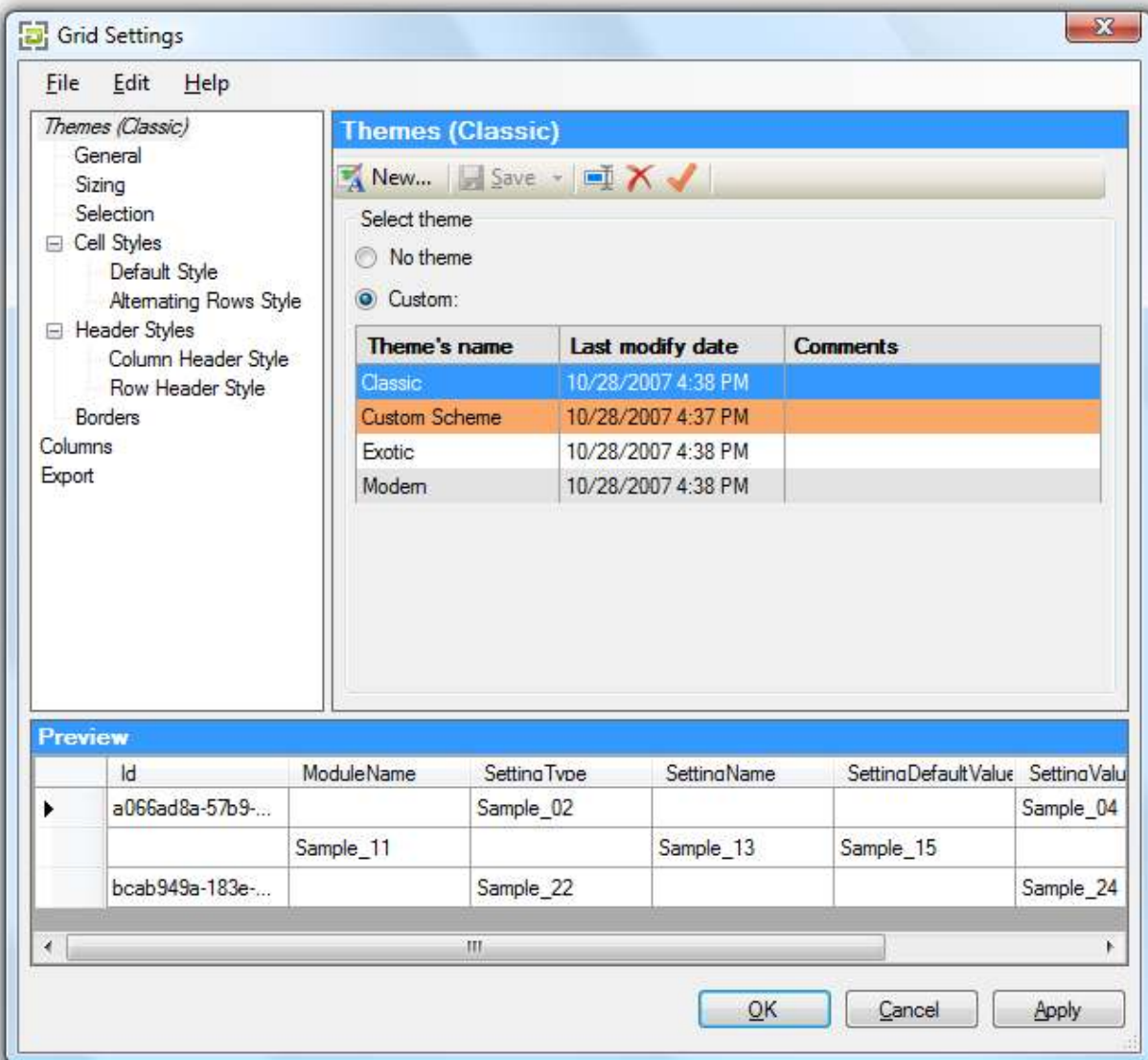
Note: If you select custom folder, all the files will be shared among all the users – if one user change some settings then all the users will reflect that change.



Customizing Grid View

The runtime grid customization allows you to define how the grid view looks by changing the colors, set columns' formatting, alignment, etc. All changes are persisted in a file and applied next time the grid view is shown.

You can find all options in "Grid Settings" dialog, which can be opened by clicking on the extension button, from the context menu or by using shortcut key combination depending on the [Integration settings](#).



The dialog contains three parts: on the left side is the tree view navigation used to



specify what you want to customize. When a node is selected on the right side are shown the settings related to that node. On the bottom the preview is placed where you can see how the grid will look if you accept all the changes.

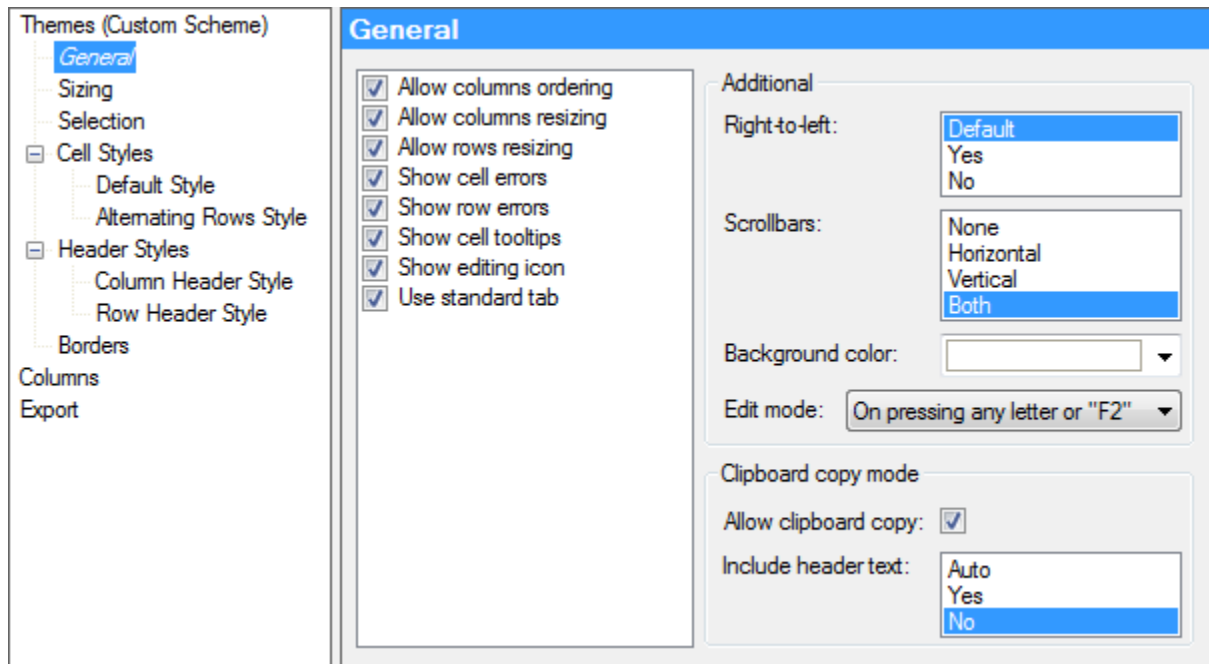
Themes

Themes represent persisted configurations for grid view. Themes are data independent – themes keep only non-data related settings like colors, sizes, formatting, etc. Once a theme is defined it could be set as default theme and as result all the grids will start using the same theme if no other theme is selected.

The themes contain several sets of settings described in the next chapters.

General Settings

To edit the general settings, open [Grid settings](#) dialog and select “General” from the tree view navigation.



In the setting editor you will see check-boxes controlling some general features of the grid view:

- “Allow columns reordering” – when checked you will be able to move columns to a different position by dragging it by the column's title;
- “Allow columns resizing” – check this if you want to be able to change the column's width by using mouse;
- “Allows rows resizing” – if you need to change the height of each row then check this;



- “Show cell errors” – whether or not to show the error glyph in the cell containing error;
- “Show row errors” – whether the row header will display the error glyph for each row that contains a data entry error;
- “Show cell tooltips” – whether or not show tooltip when the mouse pointer pauses on a cell. It is useful in case the cell size is not enough to show the whole content ;
- “Show editing icon” – whether or not editing glyph is visible in the row header of the cell being edited;
- “Use standard Tab” – whether the TAB key moves the focus to the next control in the tab order rather than moving focus on the next cell in the grid view.

To set how the control elements are aligned use “Right-To-Left” option. “Scrollbars” option allows you to define whether or not the scroll bars are shown.

The background color of the grid view can be changed using standard color picker. Here the background is where no rows or columns are shown in the area of the grid view control. If you need to change the background of the cell see [Cell Styles](#) for more information.

The last option in this group is “Edit Mode”. Use this option to select how to initiate typing in a cell in order to change its value.

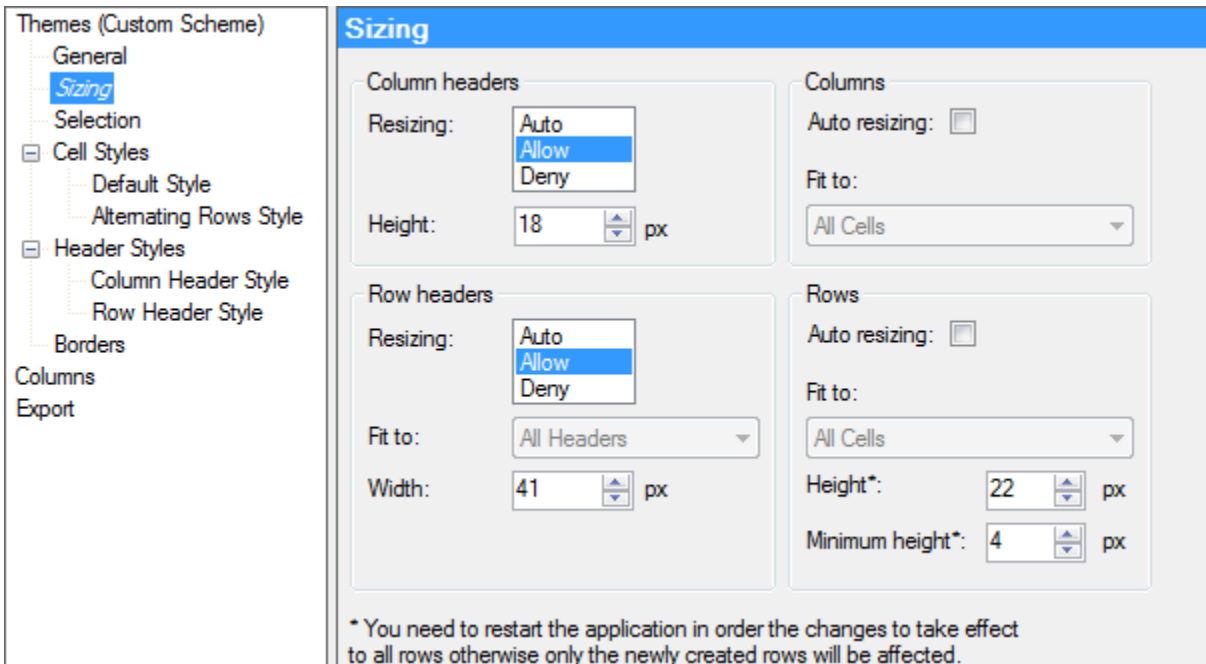
The last group of options is related to the clipboard. Check “Allow Clipboard copy” if you want to use clipboard. If clipboard is enabled you are able to select how to deal with column and rows headers. There are three possible values:

- “Auto” – row or column header text is included for rows or columns that contain selected cells only when the [selection mode](#) is set to “Row Headers “ or “Column headers” and at least one header is selected;
- “Yes” – header text is included for rows and columns that contain selected cells;
- “No” – header text is not included.



Sizing

To setup the grid view behavior related to the columns or rows size select from the tree



view "Sizing".

The settings are for column and row headers and for columns and rows.

In "Column header" settings you are able to define whether or not the columns should be resized. The possible options are:

- "Auto" - the column header height adjusts to fit the contents of all the column header cells;
- "Allow" - users can adjust the column header height with the mouse;
- "Deny" - users cannot adjust the column header height with the mouse.

In addition you can define the "Height" of the column header. The size is only valid if the column resize mode is not set to "Auto".

You can also specify how the widths of the columns are adjusted. To enable auto resizing of the columns check "Auto resizing" checkbox in "Columns" group. If this option is checked, then you will be able to select exactly how the columns should be resized from a drop-down list. The possible values are:

- "All Cells" – the column widths adjust to fit the contents of all cells in the columns, including header cells;



- “All Cells Except Header” – the column widths adjust to fit the contents of all cells in the columns, excluding header cells;
- “Column Header” – the column widths adjust to fit the contents of the column header cells;
- “Displayed Cells” – the column widths adjust to fit the contents of all cells in the columns that are in rows currently displayed onscreen, including header cells;
- “Displayed Cells Except Header” – the column widths adjust to fit the contents of all cells in the columns that are in rows currently displayed onscreen, excluding header cells;
- “Displayed Area” – the column widths adjust so that the widths of all columns exactly fill the display area of the grid, requiring horizontal scrolling only to keep column widths above the minimum column width specified for column. Relative column widths are determined by the relative fill weight values for each column.

The row header resizing options are the same as column header resize options, but when you select “Auto” resize mode, then you will be also able to select how the row header will be adjusted. And here the possible options are:

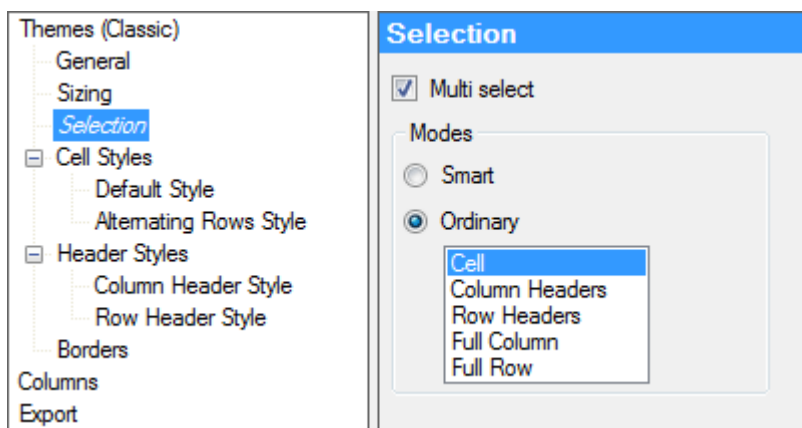
- “All Headers” – the row header width adjusts to fit the contents of all the row header cells;
- “Displayed Headers” – the row header width adjusts to fit the contents of all the row headers in the currently displayed rows;
- “First Header” – the row header width adjusts to fit the contents of the first row header.

If you select “Allow” or “Deny” as resizing mode, you can then define the row header width.

For the rows auto resizing option you have the same options as for columns auto resizing. In addition you can also specify default “Height” and “Minimum height” for the row.

Note: Specifying new values for “Height” and/or “Minimum height” will reflect only the new rows until the application is not restarted.

Selection



Here you are able to specify how you want to select data from the grid. If you want to select more than one cell, row or column at a time, check “Multi select”.

In the “Modes” group you can change the selection



behaviour. In general you have two options - "Smart" and "Ordinary".

"Smart" selection mode allows you to select one or more individual cells but in addition you can select the whole grid by clicking on the top left header cell or to select whole row or column by clicking on the header.

If you choose "Ordinary" selection mode, you have also select one of the following values:

- "Cell" – one or more individual cells can be selected;
- "Column Headers" – the column will be selected by clicking in the column's header cell. An individual cell can be selected by clicking that cell;
- "Row Headers" – the row will be selected by clicking in the row's header cell. An individual cell can be selected by clicking that cell;
- "Full Column" – the entire column will be selected by clicking the column's header or a cell contained in that column;
- "Full Row" – the entire row will be selected by clicking its row's header or a cell contained in that row.

Cell Styles

In the tree view navigation, you are able to define the default cell style valid for all the cells in the grid.

Note: The default cell style is used for all cells for which no column or alternating row formatting is applied.

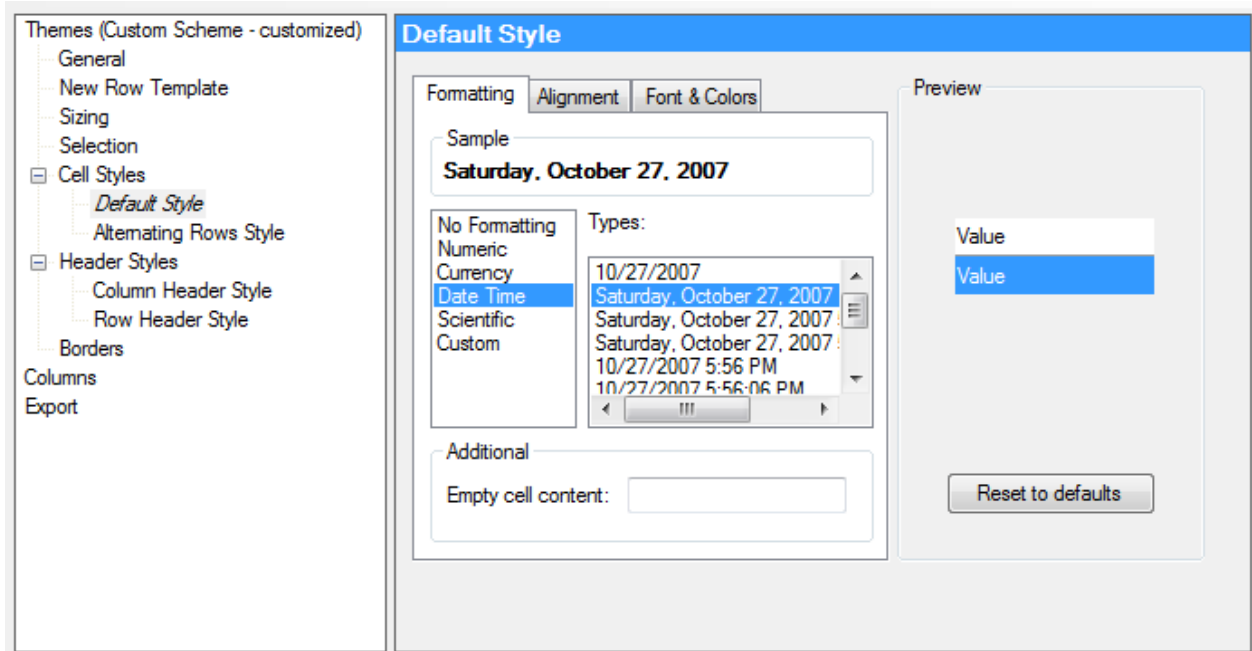
The Cell Style settings contain two sub-settings: "Default Style" – for all cells and "Alternating Rows Style" – the style applied to odd-numbered rows.

Default Style

By setting the default cell style you define how to display all the grid cells where no additional formatting is applied. The default style includes the value formatting, the alignment, font and colors.

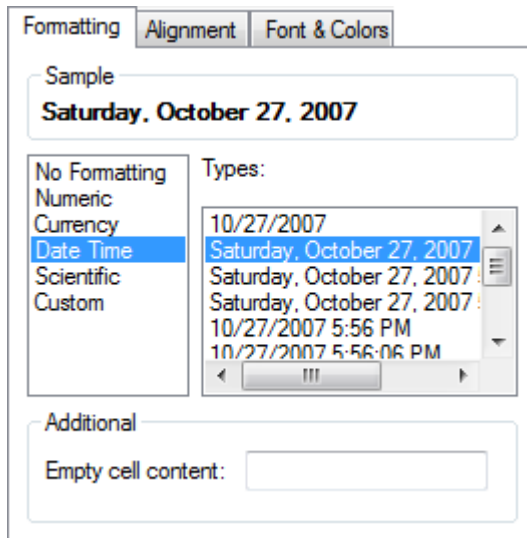
Note: If alternating cell style or a column cell style is defined, then this style is used instead the default one. If both are defined the alternating cell style is applied instead of column cell style for the alternating rows.

To change default cell style open "Grid Settings" dialog and click on "Default Style" under "Cell Style" in the navigation tree.



In the middle of the dialog you can see the tab pages where the style is edited. On the right side you will see a preview of the style: the one on the top shows non-selected cell while the other shows how selected cell looks.

If you want to reset all the changes you've made to the style you can do that by using "Reset to defaults".



Defining style

Style definition includes three groups of settings – value formatting, value alignment within the cell and the cell font and colors. These three groups you will see as three tab pages.

On the left side of the "Formatting" you will see a list with data types. By selecting data type (for example Date Time like it is on picture), you will see the available formatting options – in this case different ways to format dates.

If, for some reason, you can't find appropriate formatting for your data type, you can either select "No formatting" or to enter custom formatting.

Selecting "No Formatting" will make the data value to be shown as string based on the Regional and Language Options in Control Panel.

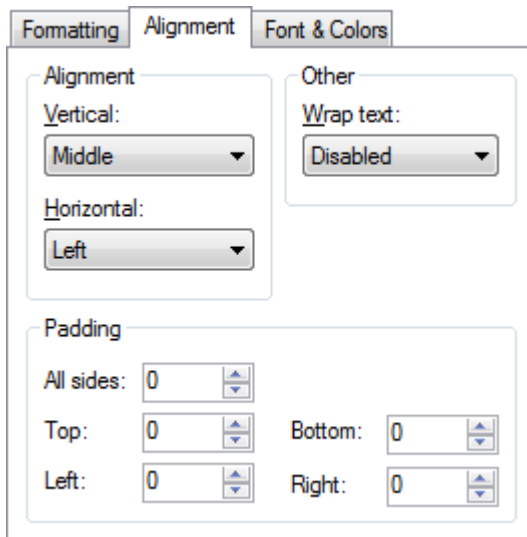


Custom formatting on the other hand allows you to define complex formatting that will meet your requirements. For example you may define custom format as follows:

- “0.00 \$” – All numeric data will be formatted as currency. You may replace the symbol “\$” with the one specifying your currency.
- “0.00 %” – All numeric data will be formatted as percentage

As additional option you can define what text to be shown when the cell does not contain value. By default the empty cell value is simply empty text.

Note: If additional style is defined for column then the column style is used instead the default one.

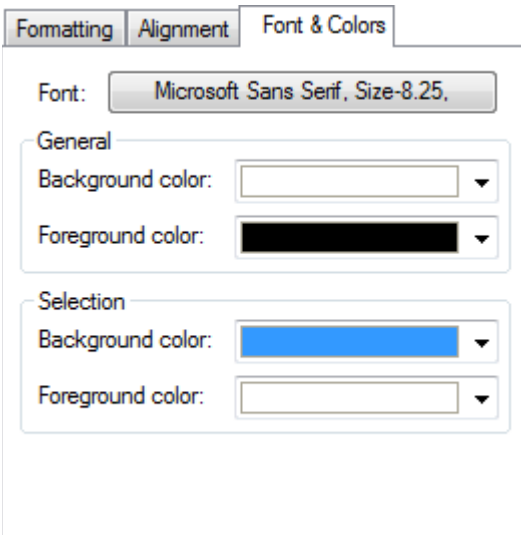


The second set of options is related to the alignment. On the second tab page “Alignment” you can set how you prefer to cell value to be aligned. You can set Vertical alignment to be “Top”, “Middle”, “Bottom” or “Default”.

For horizontal alignment the valid values are “Left”, “Center” and “Right”.

From “Wrap Text” drop-down list you can specify whether textual content in a cell should be wrapped to subsequent lines or truncated when it is too long to fit on a single line. By default this is “Disabled”.

Additionally you can control the cell padding – the padding defines how much free space to be left between the cell borders and the area where the value is shown.



Note: If additional style is defined for column then the column style is used instead the default one.

And the last group of settings is “Font & Colors”.

Click on the button where the font is shown and the standard font dialog will be shown. Select the desired font, select the style – “Bold”, “Italic”, etc, select the size and close it. The new font will appear in the button as preview.

Bellow the font you can see two group boxes where you can change the background and foreground colors.



The first group "General" defines the colors of the cell while the second one "Selection" defines the colors for a selected text.

Note: If additional style is defined for column then the column style is used instead the default one.

Alternating Row Style

Having a grid view with a lot of rows and columns you might find useful to define different style for the alternating rows. Alternating rows allows you to distinguish each row and improves readability.

To define alternating row style open "DataGridView Extension" dialog and click on "Alternating Row Style" under "Cell Style" in the navigation tree.

For more information about how to edit a style see [defining style](#).

Header Style

Each grid contains columns and rows and each column and row can have header - column headers contains the name of the column while the row headers, depending on the options can show whether the row is edited, has error, etc.

By clicking on "Header Style" in the tree view navigator, you will see an option whether or not to use the current Windows theme colors for the row and column headers. When this option is checked, all the colors applied on the headers – both column and rows will be obtained from the currently selected Windows theme.

Note: Uncheck "Use windows visual styles" if you want to define your own colors for column and row headers.

Column Header Style

The column header is used to show the name of the columns and also to reorder or resize the columns. Select "Column Header Style" under "Header Style" in the tree view navigator. You will find check-box "Show column headers" – checked by default. Uncheck this in case you prefer to not see the name of the columns and/or reorder or resize columns.

When "Show column headers" is checked you are able to define the style of the header. How to define a style see in [Defining style](#).



Note: "Column Header Style" defines the default header style used if no column header style is defined. If there is specific header style to certain column then it will be used instead this one.

Row Header Style

The row headers style follows the same logic as column header styles. Here you will find again option for showing/hiding row headers.

See [Defining style](#) for more information about style definition.

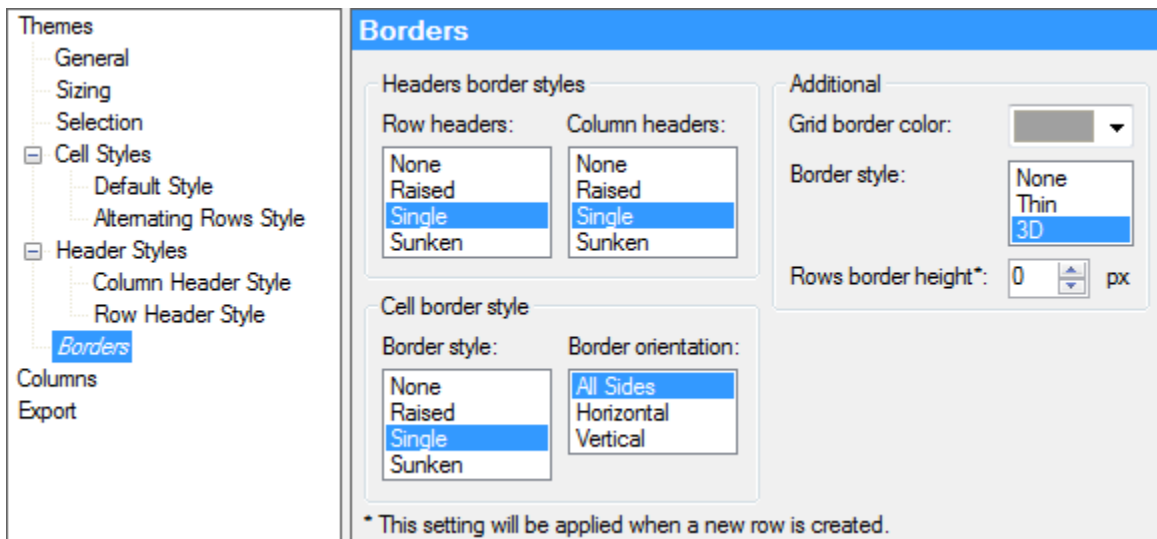
Borders

Here you are able to customize the borders of the column and row headers, the borders of the cell and also the border of the grid.

For "Row Headers", "Column Headers" and cell's "Border style" you can select between the following possible values:

- "None" – no borders;
- "Raised" – three-dimensional raised border;
- "Single" – single-line border;
- "Sunken" – three-dimensional sunken border.

Also, for the cells you can specify where you want to have borders – "Vertically", "Horizontally" or "Both".



What the borders' color should be you can select from Grid Border color using the standard color picker.

The grid itself also has border. You can set "None" – for no border; "Thin" for a single-line border or "3D" for three-dimensional border.



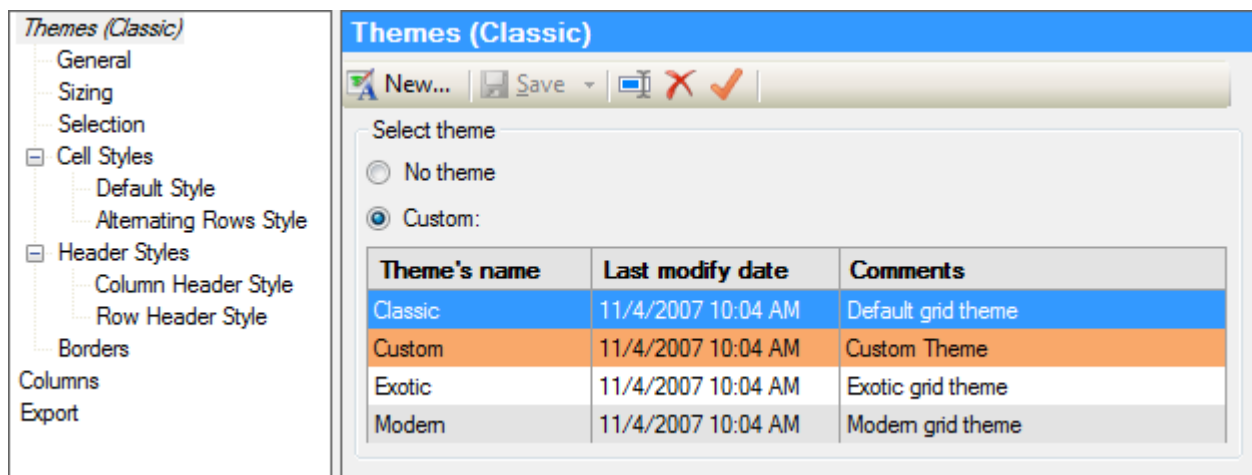
The last option is the row border height.

Note: Specifying new value for rows border height will reflect only the new rows until the application is not restarted.

Themes

All the setting described until now are persisted as theme. If you click on "Themes" in the tree view navigation, you will see a list with all available themes.

If for some reason you do not want to apply any theme on the grid then select "No Theme" radio button, otherwise check "Custom" and select a theme from the list.



If you want to make a new theme, click on "New..." from the tool bar. "Save As" dialog is shown. Enter the name for the new theme and if you want to set the newly created theme as default for all grids without specified theme, check "Make Default".



The newly created theme becomes selected theme for the current grid and now you can customize all its settings.

When you change one or more settings for a theme, you will see that next to the theme's name the word "customized" appears. This means that for the selected grid, this theme is customized - for all other grids that share the same theme these changes are not applied. In this situation you have three possibilities:



- Leave it as it is – all the changes to the current grid will be persisted so next time you open it again it will apply the last customizations. This is appropriate if the changes are only related to the current grid;
- Save the theme – this will force all the grids sharing the same theme to update in accordance with the changes. Use this when the changes are valid for all the grids;
- Save theme as new theme – to save giving the theme new name. This option is useful in case you need to set this theme to another grid except the current one, but not to all grids sharing the theme.

Once created, you can change the name of a theme by using “Rename” button from the tool bar.

Use “Delete” button to delete the selected theme and “Default” button to set the theme as default.

Columns

You can customize each grid column separately. To do that, select “Columns” from the tree view navigation in the “Grid View” dialog.

On the right side of the dialog you will see a list of all columns in the grid. In the list with columns you can specify which columns you want to be shown and which not. Also you can change the column header text.

Visible	HeaderText
<input checked="" type="checkbox"/>	Id
<input checked="" type="checkbox"/>	ModuleName
<input checked="" type="checkbox"/>	SettingType
<input checked="" type="checkbox"/>	SettingName
<input checked="" type="checkbox"/>	SettingValue
<input checked="" type="checkbox"/>	SettingDefaultValue
<input checked="" type="checkbox"/>	UserOveridable

Above the columns list you have a filter from where you can select which columns to be shown in the columns list. The three possible options are: “Visible” – the list will contains only columns where Visible is checked; “Hidden” – the list will contains only rows where the Visible is not checked; “All” – the list will contain all the columns.

In addition you can use the links “Show All” and “Hide All” to set at once the appropriate value for the columns' visibility.



You can also change the column order by using the button on the right: “Move Up” and “Move Down”.

Click “Edit...” button to open “Column Settings” dialog where you can customize the all column's features.

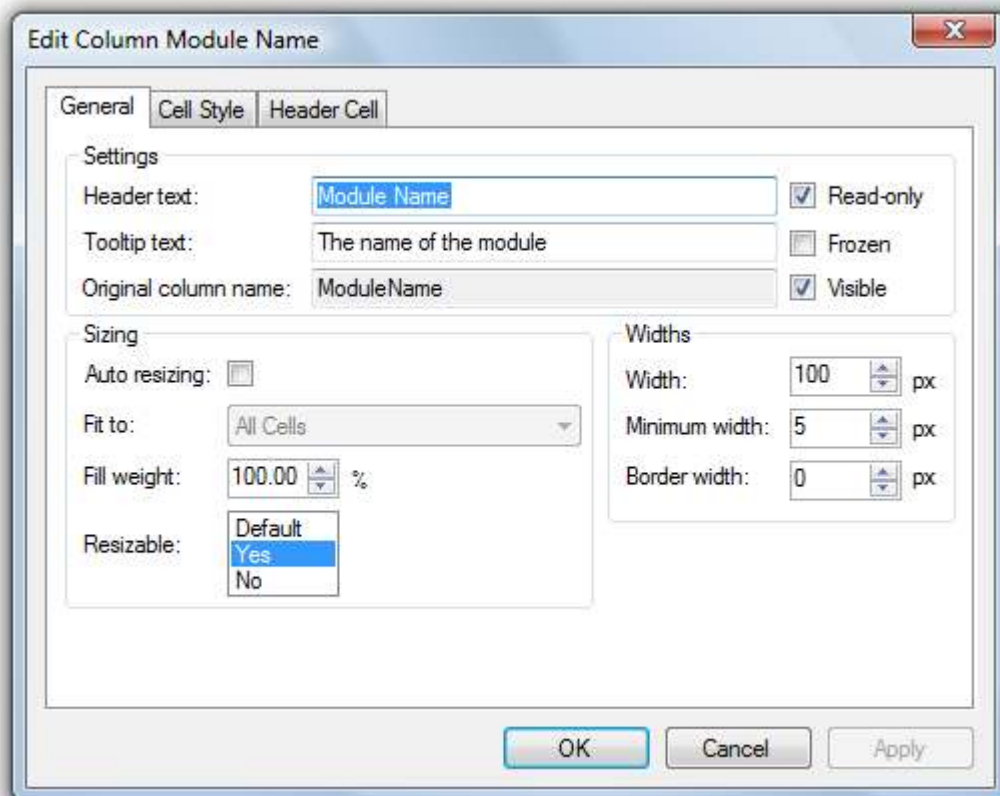
Editing Column Style

Editing column style involves three components:

- General column settings
- Default Cell Style for the column which will be used instead the [Default Style](#)
- Column header style which will be used instead the [Column Header Style](#)

In General tab page you will find the following settings:

- Header Text – contains the text displayed in the column's header. By default is set to Original Column Name
- Tooltip Text – the text displayed as tooltip when the user points the column's header – by default empty
- Original Column Name – the original name of the column – read-only
- Read only– indication whether you can edit the column's cells
- Frozen – indication whether the column will move when the user scrolls horizontally. When is set, all prior columns will be also frozen even if they are not explicitly set as frozen





- Visible – indication whether the column is visible or not

If you check “Auto resizing” check box in “Sizing” group the column will keep its width depending on the selected “Fit to” value from the dropdown list. The “Fill weight” specifies the width of the column when it is in fill mode, relative to the widths of other fill-mode columns in the grid. For more information see [Sizing](#).

Whether or not the column is resizable you can set in “Resizable”. The options are: “Default” – behaves in a default manner; “Yes” – can resize column; “No” the column is not resizable.

In the group “Widths” you can specify the column width, the minimum column width and also the size of the divider – the border between the columns.

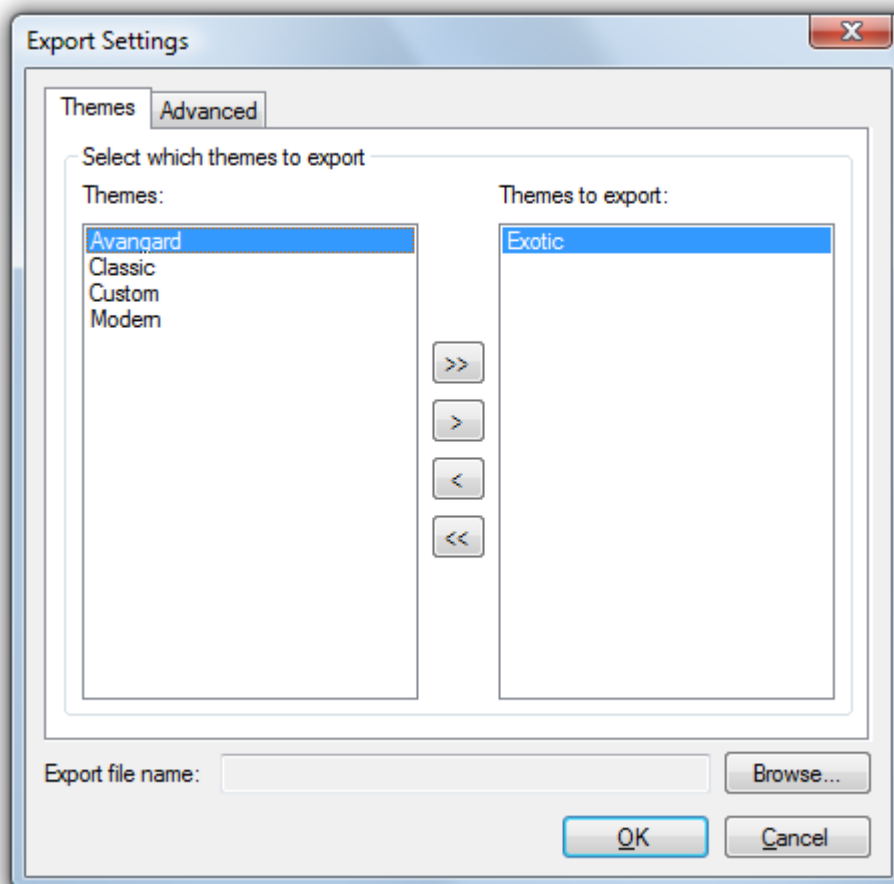
In “Cell style” tab page you can define cell style for the current column only which will be used instead the [default style](#) defined under [Cell Styles](#). How to make a style see in [Defining style](#).

You can also specify header cell style for that column in “Header Cell” tab page. See [Defining style](#) for more information.

Applying column style from column

One handy function is to apply a columns style to another column. To do that, right-click on a column’s header to which you want to apply settings from another column. Then,

from “Apply Style From” select the columns which format you want to apply. As result the both columns will look alike.



Export/Import Settings

In the “Grid settings” dialog you can also export or import grid view settings by using export/import



functionality under the File menu.

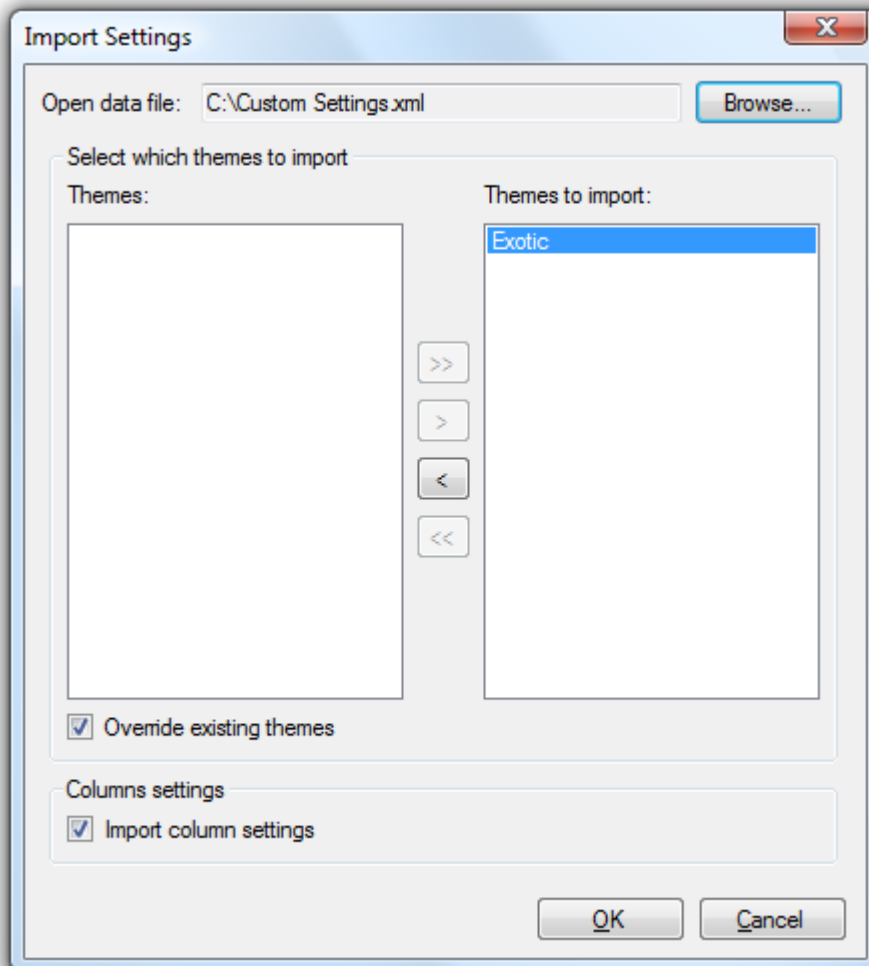
To export open [Grid Settings](#) dialog and select “Export settings...” from “File” menu.

The “Export Settings” dialog contains two tab pages. In the tab page “Themes” you have to select which themes to be exported by using the four buttons. You also have to specify location and file name where the settings to be saved.

In “Advanced” tab, you can specify which column settings to be exported. Here the possible options are:

- “Do not export column settings” – only themes will be exported;
- “Export settings for the current grid” – select this option if you need to exchange column formatting for the currently selected grid. Useful when you want to exchange the formatting of a certain grid with another user;
- “Export settings for all grids” – select when you need to export all settings – themes and grid columns. This is useful when you want to give to another user all your grid customizations, for example in case of a new installation of the application.

To import previously exported settings, select “Import Settings...” under File menu in “Grid Settings” dialog.





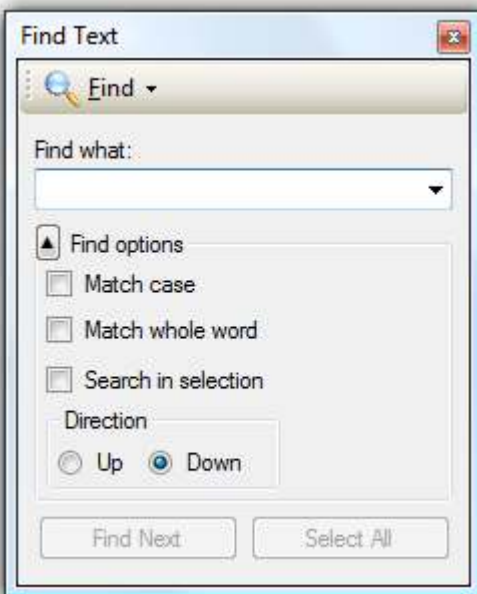
When “Import Settings” dialog is opened, you have to select a file from where the setting to be imported. When a file is selected all the exported themes will be shown in the themes for import list. If you don’t want to import some of them remove it by using the four buttons. If you want to override the themes with the same names check “Override existing themes”.

If the file contains exported columns settings and you want to import them check also “Import column settings” check box.

Note: “Import column settings” check box is only available if the file contains column settings. Otherwise this option is disabled.

Find

To find a text in a grid you can use “Find” – open from the context menu or user the find shortcut (Ctrl+F by default). When the find dialog is opened, enter the text you are searching for and click “Find Next”.



The search is performed from top to bottom, left to right, starting from the currently selected cell. If you need to start from the beginning of the grid select the first cell.

If you want to see all the cells that match the search text, click on “Select All” button.

Note: “Select all” button is enabled only if Multi select option in [Selection](#) is enabled.

You can also specify more search options by expanding the Find options and checking one or more search options:

- “Match case” – by checking this the search will be case-sensitive otherwise not
- “Match whole word” – check this to locate only cells where the search text is a whole words
- “Search in selection” – check if you have some selected cells and you need to search only in the selection. When Search in selection is checked, the “Select all” button becomes “Unselect all” and when is clicked it will deselect all the cells where matching the search criteria.



In the “Direction” you can specify the direction of the search. When “Down” (by default) is selected the search performs from left to right, top to bottom. If “Up” is selected the search will move from bottom to top, right to left.

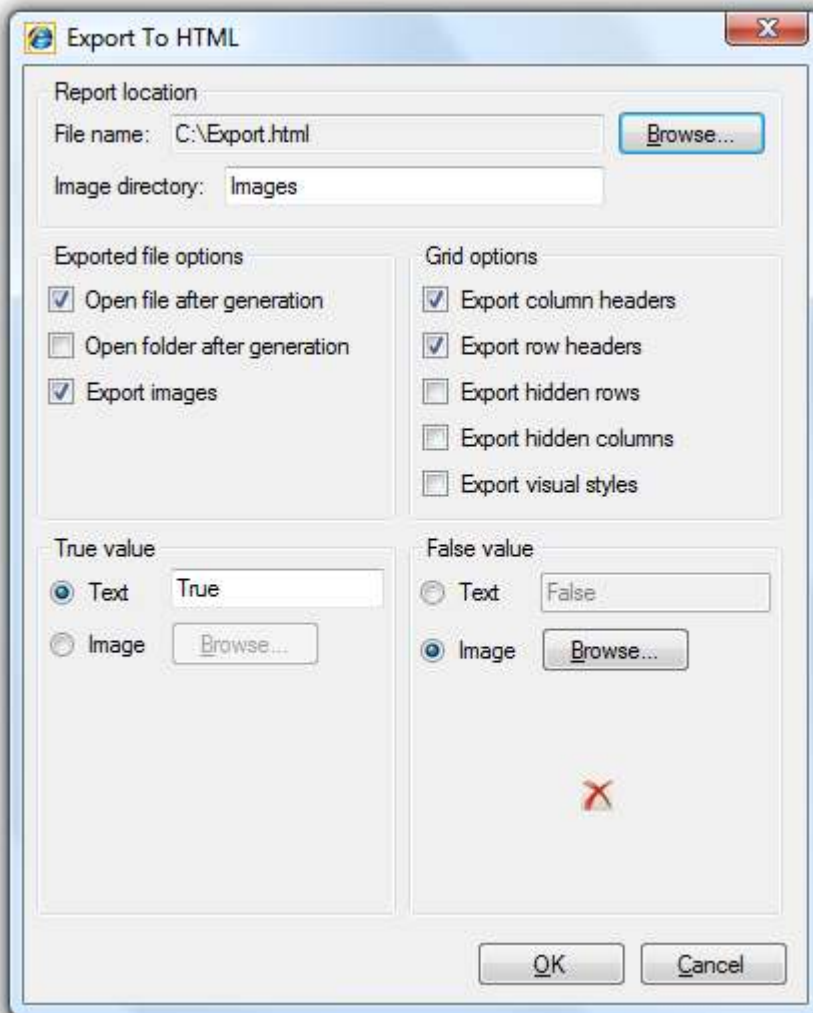
Export

Except defining themes and customizing columns, you can also export the grid data in several file formats. When the data is exported it takes into consideration all the colors, formats and other grid settings and as result you will have exported the grid in the same way it looks like – what you see is what you get.

There are two ways to export a grid – by opening “Grid Settings” dialog, selecting Export from the tree navigation and then selecting form a drop-down list the desired file format and click “Go”. The other way is to use the context menu from where you can select the export type directly.

Html

You can export the grid in Html format by selecting export to Html. Export settings dialog will be shown where you can additionally specify what and how the data to be exported.



First you need to specify file name where the grid to be stored. Because the html files can not contain images, but only link to images all the images will be stored in a sub-folder with name Images. You can also give another name to the images folder.

The second group of options is “Exported file options”.

“Open file after generation” – check this option if you want to see what is exported once the export is finished.



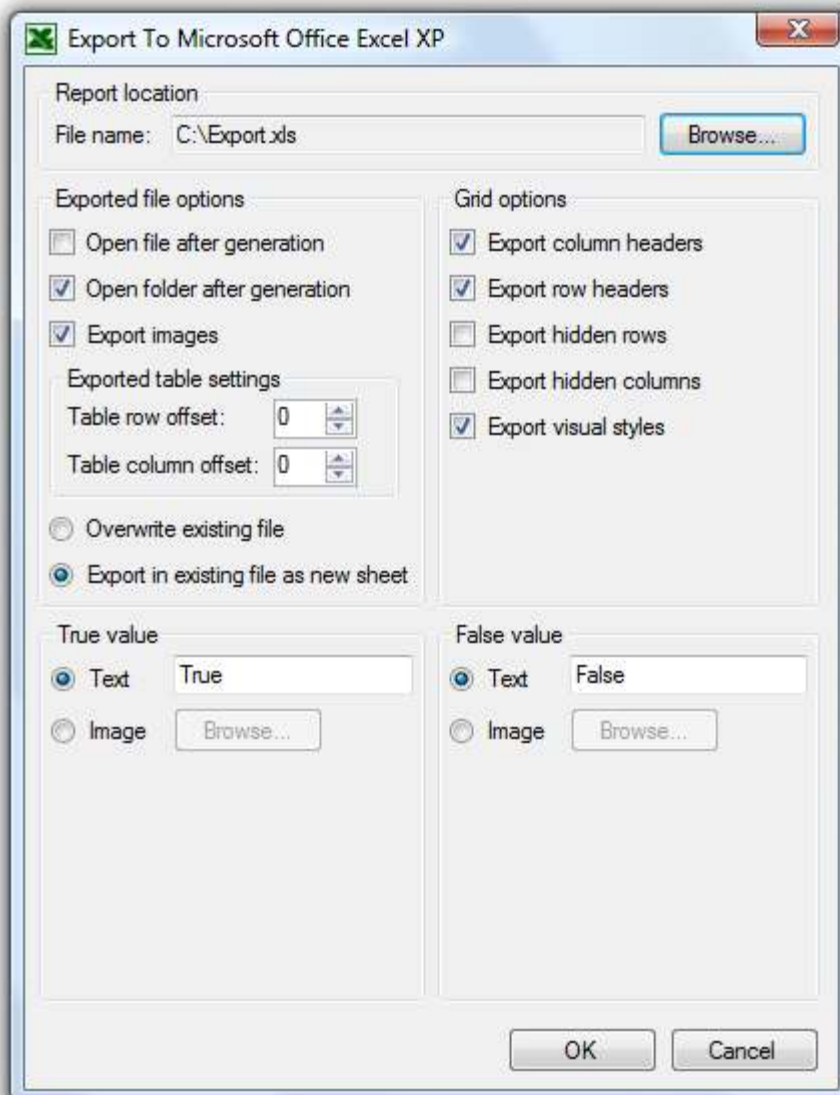
“Open folder after generation” – check to open the location where the file was created after the export is finished.

Check “Export images” if you want to have the images from the grid exported.

On the right side you can set how the grid to be exported. The possible options are:

- “Export column headers” – check this if you want the column names to be exported even if in the grid the column header are not shown;
- “Export row headers” – check this if the grid if you want to export the row headers even if in the grid they are not shown;
- “Export hidden rows” – check this if you want all rows to be exported;
- “Export hidden columns” – to export hidden columns check this option;
- “Export visual styles” – to export all the visual settings – colors, formatting, etc, check this. Otherwise the data will be exported without theme

The last two options are related to the Boolean values – you can define how the Boolean values (true or false) to be exported – as text or as images. In both cases you can set the text or image used for each value.



Microsoft Excel

Currently you can export to Microsoft Excel XP or newer. Most of the options here are the same as in Html export. The only difference is that the images are exported directly in the excel file and also the following additional options:

In “Export table settings” you can define offsets. The offsets defines where the exported grid should be place within the excel sheet.



Check “Override existing file” if you want to override file if already exists otherwise check “Export in existing file as new sheet” to export the grid in a newly created sheet.

When exporting data and selected file exists you need to close it before to continue otherwise the export will fail.

Note: Using Excel export with a grid even with a few records could take a lot of time.

Pdf

You can also export to portable document format – pdf. Again the export settings are almost the same as in export in html or Excel with some minor differences. One of the differences is that you are able to define the page size – just click on “Page Setup” button to open the “Page Settings” dialog. In the dialog you can select the page size from predefined list and the orientation – landscape or portrait. In addition you can

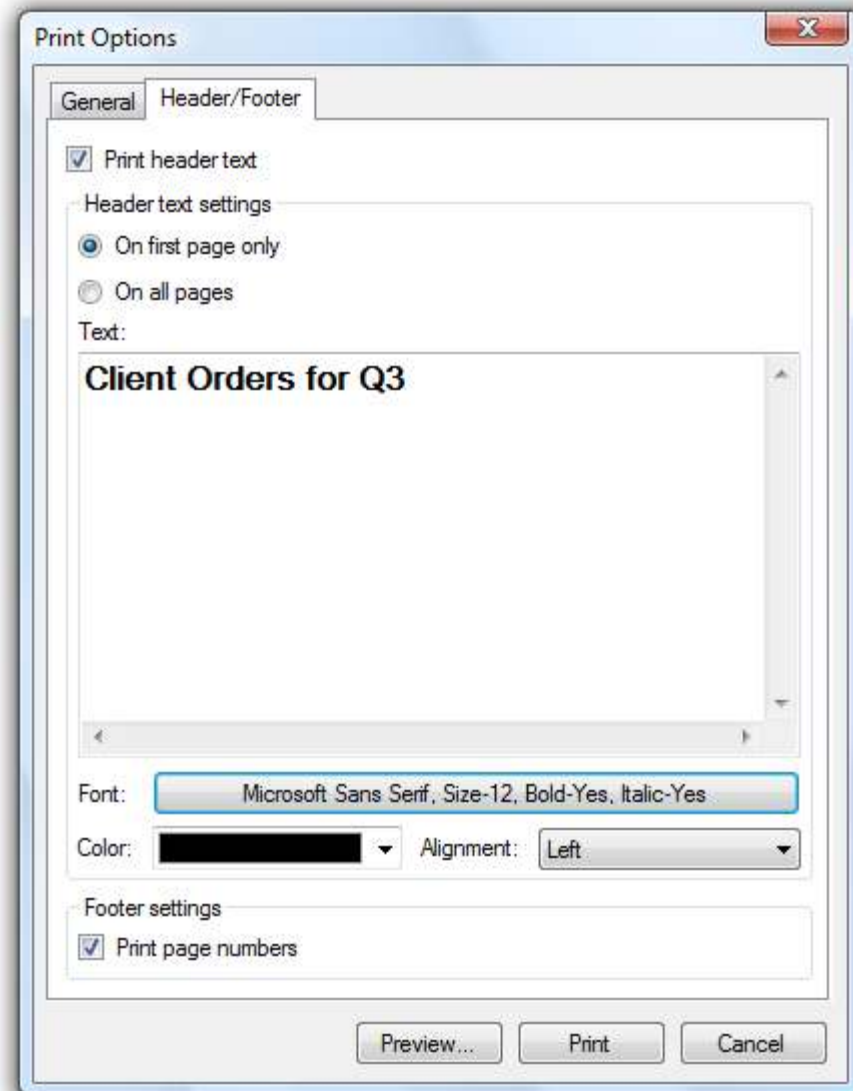
specify margins for each page site – top, left, right and bottom.

Another export option allows you to specify how to align horizontally the exported grid in a page. And there you have three options – “Left”, “Right” or “Center”.

On the second tab page “Header/Footer” you can set header and footer settings.

If you need above the exported table to put some text, check “Export header text” and type the text in the text box below.

If you prefer to have the header on the first page only select “On first page only”. To see the header





text on every page check “On all pages”.

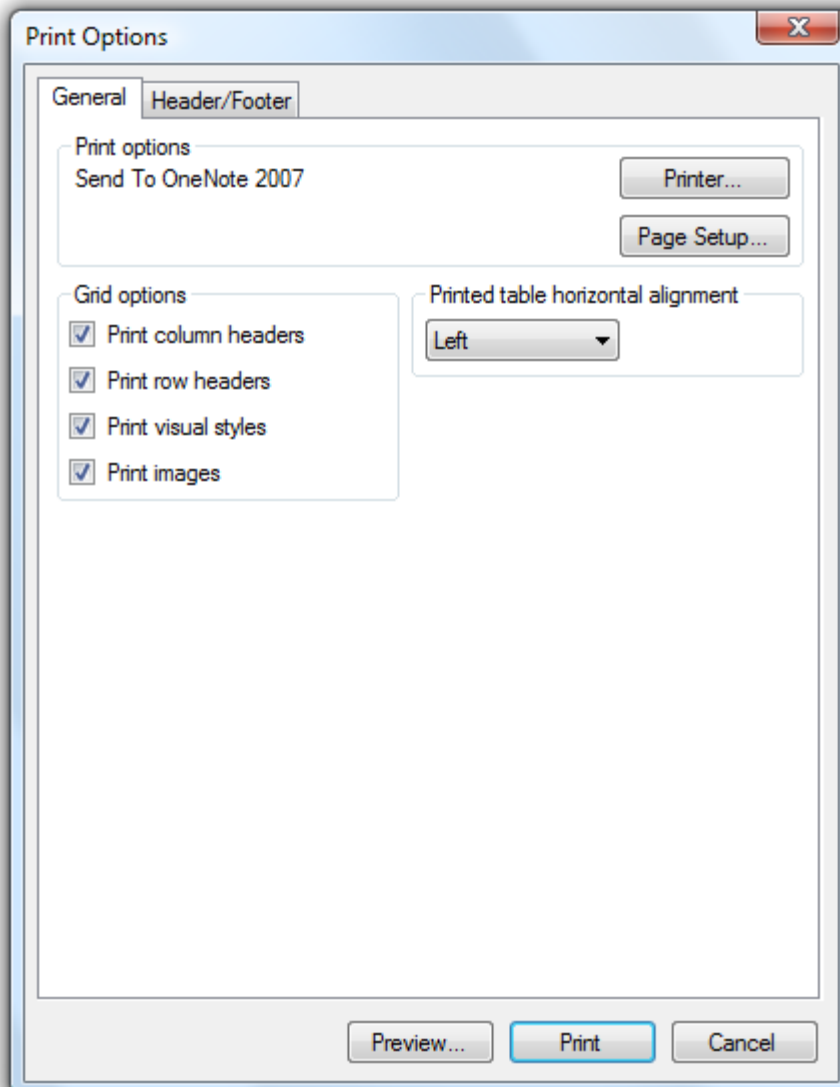
In addition you can apply some basic formatting to the header text. Click the font button to select appropriate font, its style and size. Use the color picker to specify the text color and alignment to define how the text to be aligned – Left, Right, Center or Justified.

If you want to see in the footer of the page the page number, check “Export page numbers”.

Print

You can also print the grid in the way you see it by using the print functionality. You can print by selecting “Print” from the context menu or using the shortcut key (Ctrl+P by default).

In the “Print Options” dialog you will see two tab pages. On the first tab you will see group box “Print options”. Here you will see the name of the printer and two buttons – “Printer...” and “Page Setup...”. Click “Printer...” to select another printer and to specify the number of copies you need. From “Page Setup...” select the page size, orientation and margins.



You can also specify how the grid to be printed. Use the check boxes in “Grid Options” group box. When “Print column headers” is checked the column header will be printed even if the header are not shown in the grid otherwise not. Check “Print row headers” for row headers.

To print the grid with all applied formatting and customizations check “Print visual styles”.

To print also the images check “Print images”



In addition you can specify the horizontal alignment in the page from a drip-down list.

On the second tab page "Header/Footer" you can specify the header text to be printed on the first page only or all pages. You can also check whether or not the page numbers to be printed in the page footer.

Once you define the print options you can use "Preview..." to see the report or "Print" to print it directly.

Security

Depending on the grid and the logic of the application, some of the settings might not be available or be disabled.



FAQ

When I try to edit some settings, they are disabled – why?

Depending on the grid and application logic some features might be unavailable. The security is usually configured during the design of the application by the programmers and cannot be changed from the settings.

Why in “Find” dialog “Select all” is disabled?

This button is only enabled if in “[Selection](#)” “Multi select” is allowed.

Which version of MS Excel is supported by the export?

DataGridView Extension can export to MS Excel XP and later versions.

Why the colors of my column and row headers are not applied although I have changed them?

If you want to change the colors of the row and column headers you have to ensure that the option “Use Windows Visual Styles” is not checked in the [Grid Settings](#) dialog - [Header Style](#). By default this option is checked which means that all headers are using the default colors defined by the system.

I have column style and I want to use it for another column. Is that possible?

Yes, that is possible. Right click on the column where you need to apply the settings and from the context menu go to “Apply Style From”. From the sub-menu you can select the column from where all the settings to be applied.

Export to Excel takes a lot of time. Why?

The export to Excel is based on Microsoft Primary Interop Assemblies (PIAs) which are extremely slow.

How can I share my settings to all other users of the application?

By default all the settings are stored under the user’s application data folder. You can specify custom location where the files to be stored in [Advanced Settings](#) dialog. Specify the same folder for all the users. As result they will share the same settings and when someone changes something all the users will be affected.